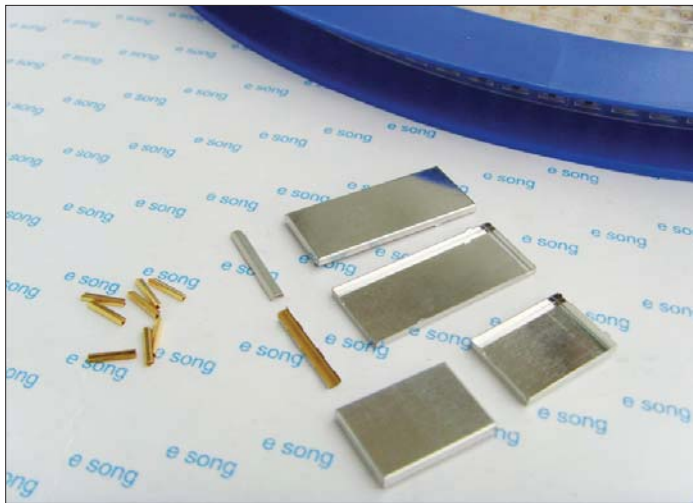
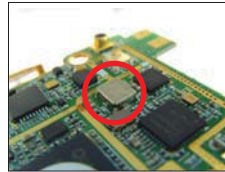


SHIELDING CAN

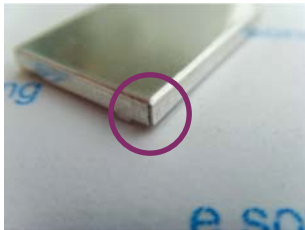


- RoHS compliant
- Custom sizes only

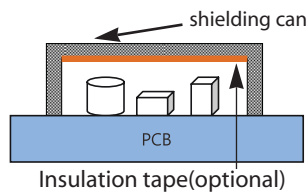
- Can be supplied in tape reels for high speed placement on the PCB
- Custom-made to user specifications



FEATURES

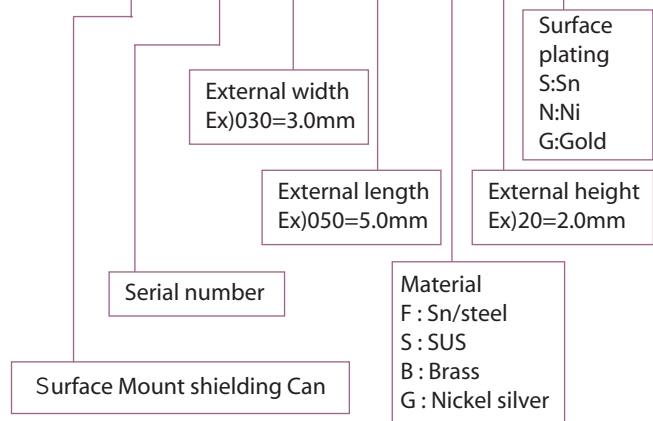


Precision-made to prevent noise leak at joints



PART NUMBER SYSTEM

SMCEA XX-XXX-XXX-XX-XX-X



MATERIAL SPECIFICATIONS

Material	Standard Number	Thickness [mm]
Cu-Ni-Zn alloy (nickel silver)	7541	0.1
Brass	C2680	0.15
Sn-plated Steel	Various	0.2
		0.3
Electric Tape (#YT130)	Backing : Polyimide film (0.025mm) Adhesive : Silicone Total thickness : 0.065mm Adhesion : 680 gf/in Operating temp. : -40 ~ 260°C	

TYPICAL PERFORMANCE

Shielding effectiveness depends on the shape of the products(material, thickness, whether the holes are present and their size). Normally attenuation is 40~50dB at 100MHz~1GHz.

PACKAGING

- Packaged in tape reels
- Bulk-packed on request.



APPLICATIONS

Notebook PC, PDA, PHS, CDMA, digital camera, LCD, GPS system for vehicle, ITS, CDROM drive, mobile phone, shielded box, measuring instrument, military device, etc.

