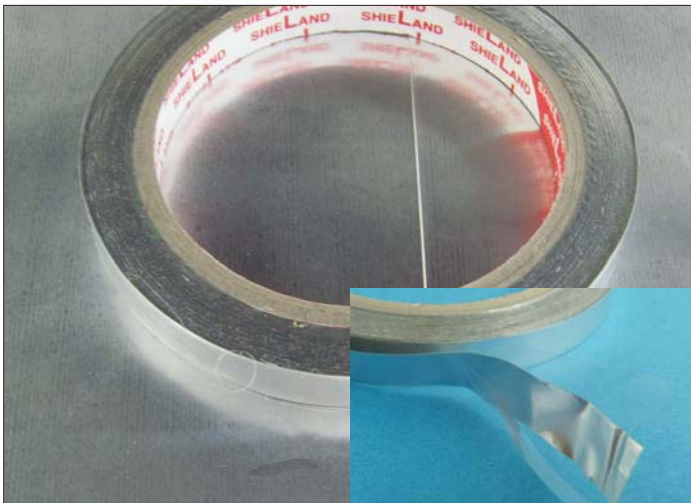


CONDUCTIVE MASKING TAPE



- **High heat endurant**
- **Excellent conductivity**

- This masking tape is used to expose conductive surface after painting so that ground connection can be made by the exposed conductive surface.
- After removal of the protective layer, the exposed surface is clean conductive Aluminum surface.

CHARACTERISTICS

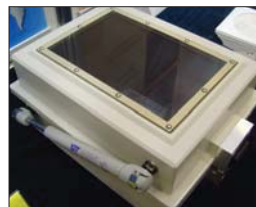
- Good electric conductivity
- Can be used in high heat applications (200C)

SPECIFICATIONS

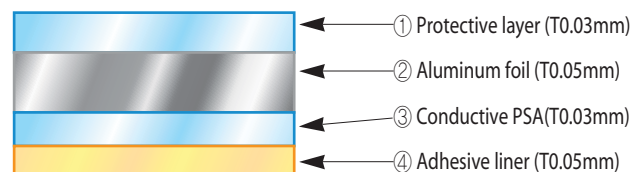
| Property | Base Material | PSA | Surface color | Thickness[mm] | Adhesive Strength [g/25mm] | Surface resistance [Ω / □] | Flame Rating |
|---------------|----------------|-----------------------|---------------|---------------|--|----------------------------|--------------|
| TEA2806 | Aluminium foil | High temp. Acrylic/Ni | Silver | | 0.08 (protective layer & liner excluded) | 1000 - | < 0.10 |
| Test Method | - | - | - | - | ASTM D 3330 | *ESQ-517-04 | - |
| Standard Size | Width: Custom | | | | Length : 50m | | |

USAGE EXAMPLES

Doors or covers of various enclosures and cabinets, which are painted.



STRUCTURE AND MATERIAL



Conductive maskin tape is applied to the case edge and painted over.



After the paint is dry, the maskin tape is removed, exposing the conductive Al surface.



Conductive cushion gasket is applied on the exposed Al surface.